



**MHHS
PROGRAMME**

Industry-led, Elexon facilitated

Settlement Timetable Expert Group (STEG) #1

06 February 2026

Version 1.0

MHHS-DEL4403

Document Classification: Public

Agenda

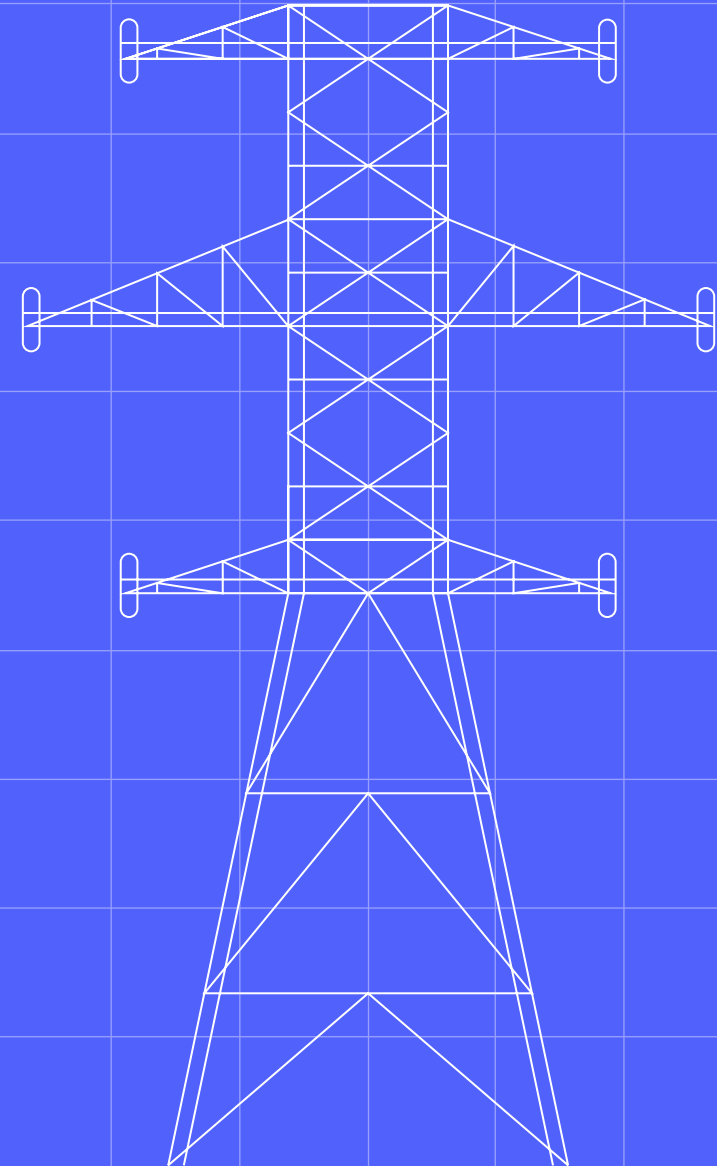
#	Item	Objective	Type	Lead(s)	Time	Page
1	Welcome and Agenda	Run-through of the agenda for this week	Information	Chair & Secretariat	14:00 – 14:05 5 mins	2
2	Introduction	Introduction to the Transition to the New Settlement Timetable (M16)	Information	Programme	14:05 – 14:20 15 mins	3
3	Plan	Plan on a Page and Governance Group Methodology	Information	Programme	14:20 – 14:30 10 mins	5
4	Governance Structure	Role of the group, Ways of Working, Choreography and Areas of Input	Information	Programme	14:30 – 14:50 20 mins	8
5	Settlement Monitoring & Criteria	Elxon providing updates on Settlement Reporting, including Performance Tolerances, Half-Hourly data over Settlement Runs and SVA Delta between Settlement Runs	Information	Elxon	14:50 – 15:35 45 mins	13
6	Migration Reporting & Criteria	Migration MCC Reporting	Information	Programme	15:35 – 15:55 20 mins	18
7	M16 Risks	Risk Matrix and latest risk scores	Information	Programme (Taken as read)	15:55 – 15:55 0 mins	21
8	Summary & Next Steps	Summarise actions and agree any agenda items for next meeting	Information	Chair & Secretariat	15:55 – 16:00 mins	23

Introduction

INFORMATION: Introduction to the Transition to the New Settlement Timetable (M16)

Programme

15 mins



Transition to new Settlement Timetable and M16 Decision - Introduction

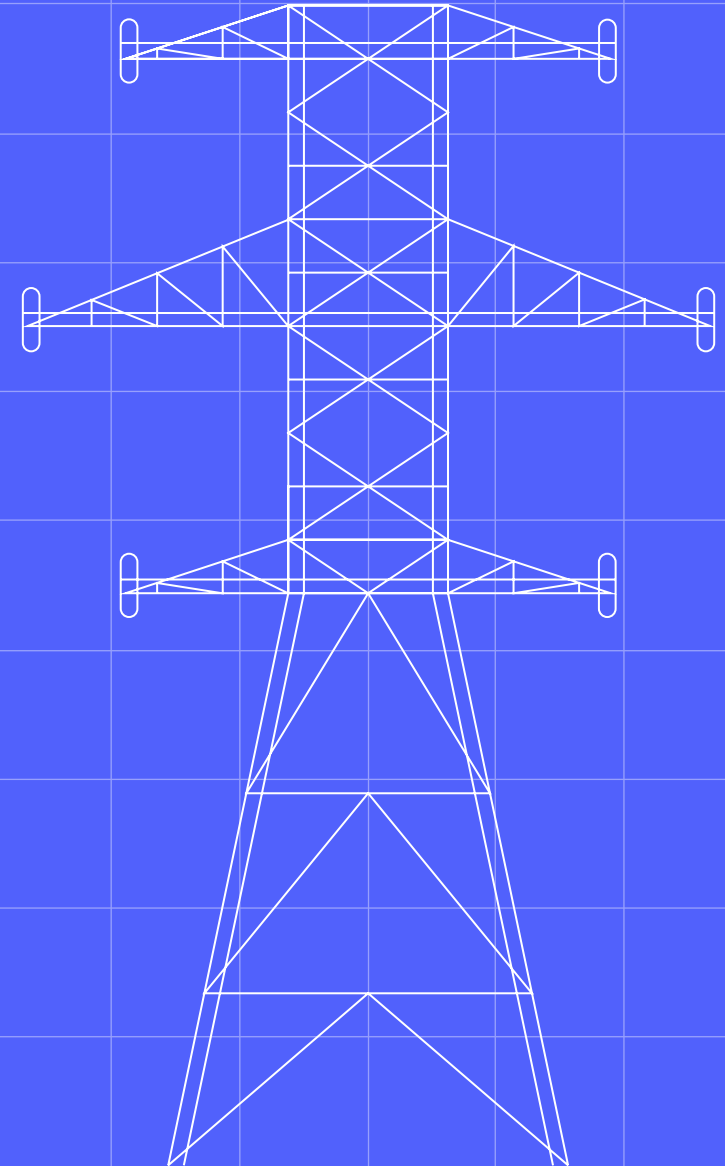
1. M16 Milestone is Cutover to the new Settlement Timetable, by shortening:
 - the reconciliation runs, i.e. Final Reconciliation (RF) moves initially from 14 months to 7, then 4 months
 - the first financial settlement run (SF) changing from 15WD to 7WD
2. Requirements are described in the agreed Requirements for the Transition to the new MHHS Settlement Timetable, see [MHHS-DEL1590 - MHHS Transition to New Settlement Timetable v2.3 Approved.pdf](#) (the Transition Design was baselined by industry in Q3 2023)
3. 2 decision points (See next slide for POAP):
 - 1st Decision in October 2026 to make the RF change to 7 months in October 2026 and then to 4 months at 02/07/27 (M16)
 - 2nd decision in April 2027 to change the SF run to 7 WD at 02/07/27 (M16)
4. 2 phases of work:
 - Methodology: Develop and define the data and criteria that will be used to enable decision making on the new settlement timetable
 - Operation: Ongoing monitoring of settlement and migration data (including related issues) to make recommendations to MCAG on 2 decision points and implementation of the new Settlement Timetable
5. The governance approach will include MCAG, a new level 4 WG (STEG), industry consultation and PAB input

Plan

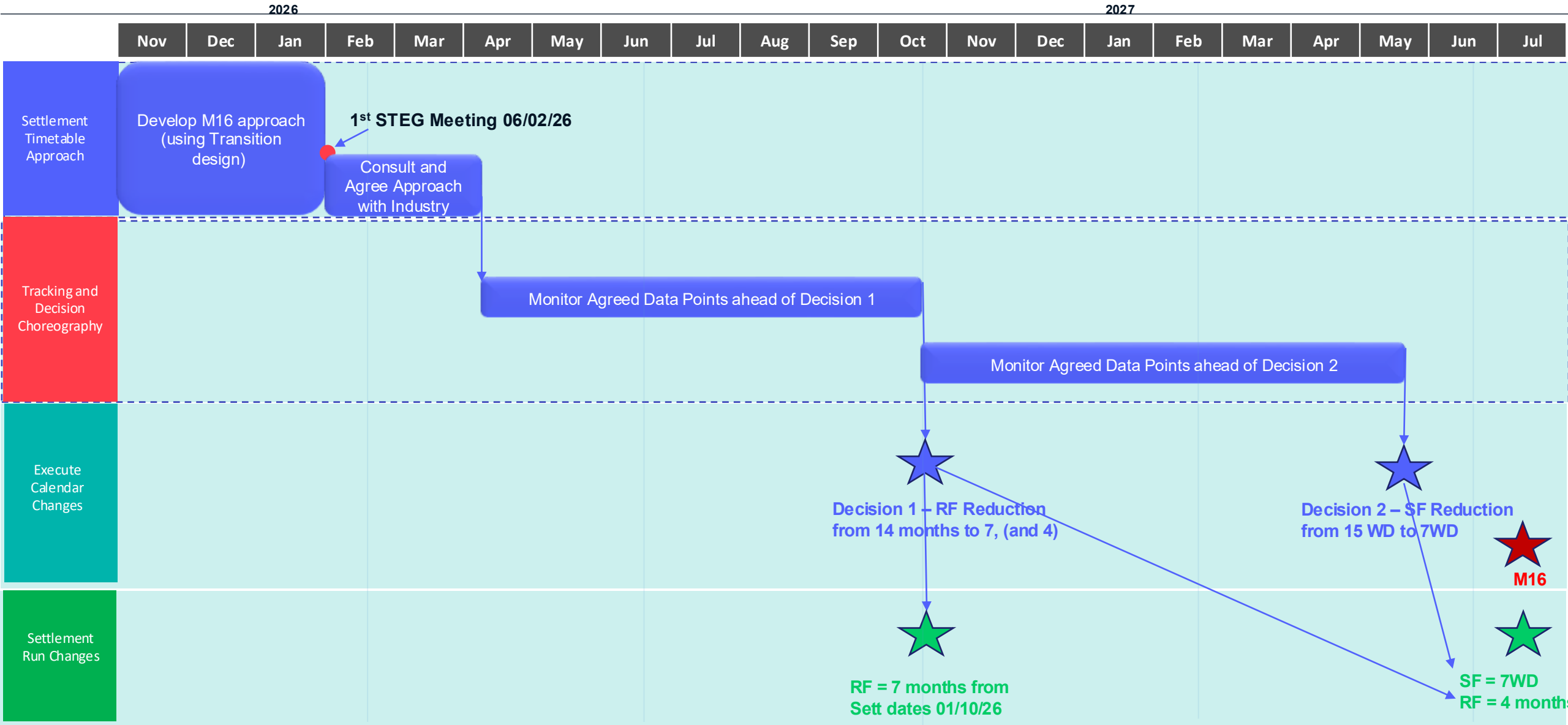
INFORMATION: Plan on a Page and Governance
Group Methodology

Programme

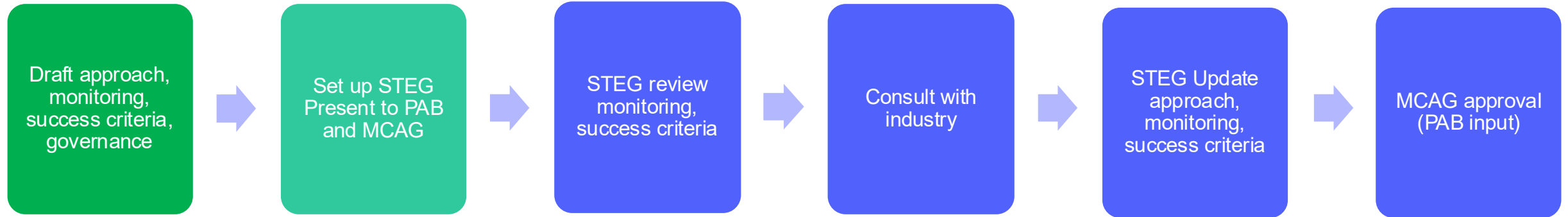
5 mins



Transition to new Settlement Timetable and M16 Decision - POAP



Transition to new Settlement Timetable and M16 Decision - Methodology



Requirements:

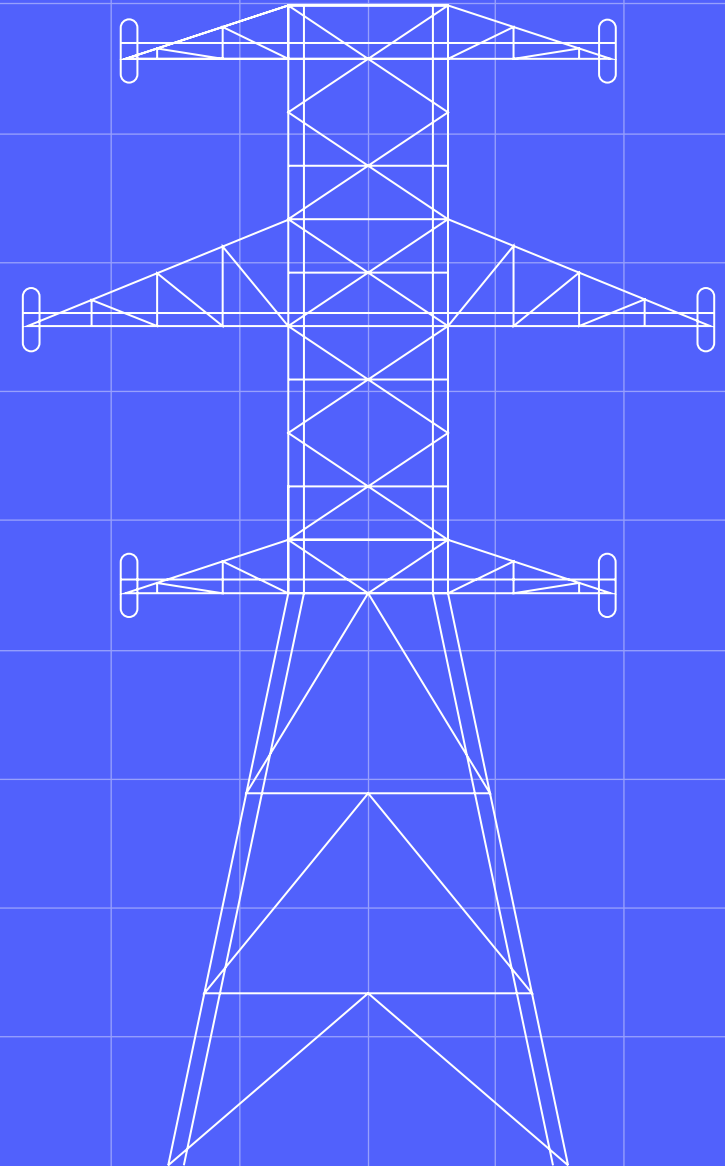
- **New Settlement Timetable Expert Group reporting to MCAG:**
 - experts on settlement performance, MHHS TOM and migration
 - develop monitoring approach, metrics and success criteria
 - monitor data points, review metric and criteria, and provide recommendations to MCAG
- **M16 decision choreography** detail is based on **Transition Design**
- **MCAG approval** of Tier 1 Milestones (with PAB input), with **recommendations to PSG** on Decisions 1 & 2

Governance Structure

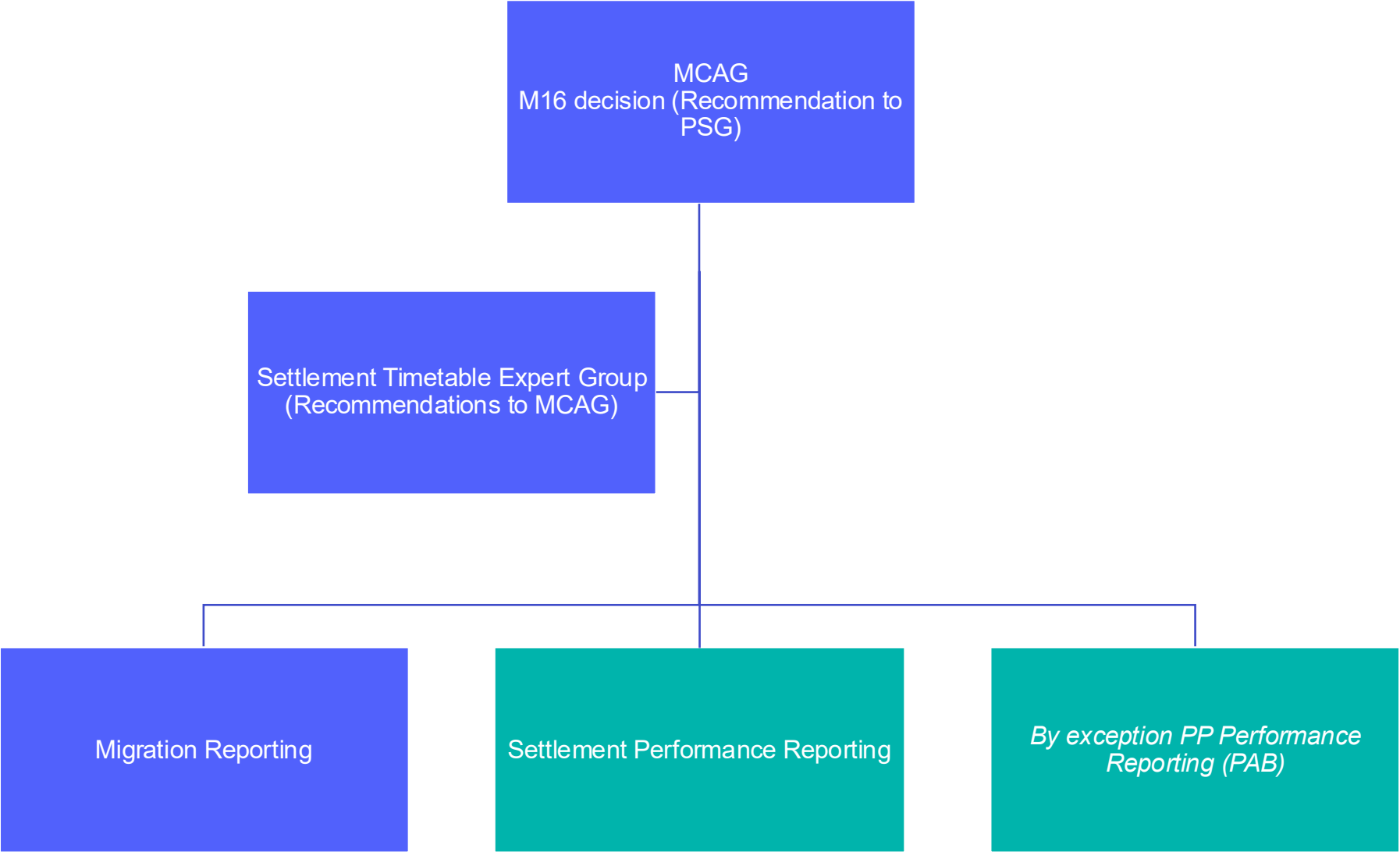
INFORMATION: Role of the group, Ways of Working, Choreography and Areas of Input

Programme

20 mins



Settlement Timetable and M16 Decision - Choreography



Settlement Timetable Expert Group (STEG Mobilisation)

MCAG approved the role of **STEG** and the new **Terms of Reference** on **29/01/2026**

Terms of Reference have been attached to the meeting papers for STEG

Key Points

- STEG is a 'closed' technical expert sub-group, meeting **fortnightly**, governed under the Level 3 Migration and Cutover Advisory Group (MCAG)
- **Membership is by invitation** and is limited to **settlement timetable subject matter experts** to -
 - Operate within the approved Transition Design solution
 - Develop and define the data and criteria that will be used to enable decision making of the Transition Design decision points
 - Ongoing monitoring of settlement and migration data, (including related issues) to enable a recommendation of the implementation of the new Settlement Timetable
 - Make Settlement Timetable recommendations, to deliver M16 (shortening the timetable to 7 and 4 months & 1st financial run from 15 WD to 7WD)

Membership

- ☐ Chaired by the SRO or an individual delegated by the SRO
- ☐ MHHS Programme Subject Matter Experts (SMEs)
- ☐ Elexon Subject Matter Experts (SMEs)
- ☐ Industry Settlement Subject Matter Experts (SMEs)
- ☐ MHHS Programme Management Office (PMO)

Governance

- ☐ The STEG will report to and make recommendations to MCAG. MCAG will approve or reject decisions.
- ☐ Where relevant STEG will consult with industry before making recommendations
- ☐ STEG papers, headline reports and artefacts will be publicly available via the collaboration base and MHHS website

Meeting Cadence for Phase 1

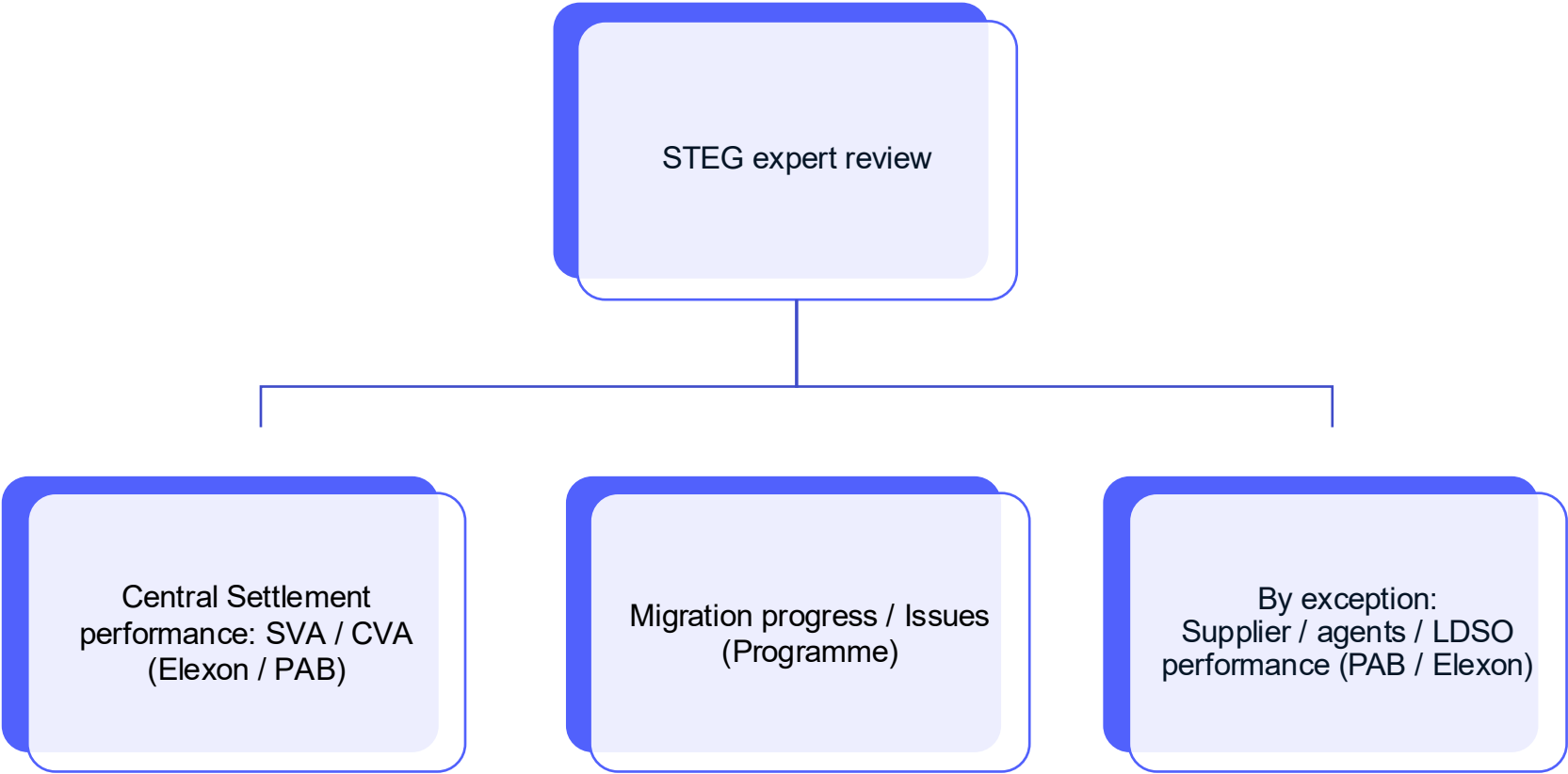
- Fortnightly meetings on Thursdays from 10am – 12pm (cadence for the first two months)

Objective

- Develop industry consultation paper for publication in mid-March
- Develop the monitoring data points, metrics and criteria

Programme will inform industry on progress via:

- Regular MCAG reports
- PAB updates
- MHHS STEG Website
- MHHS Clock

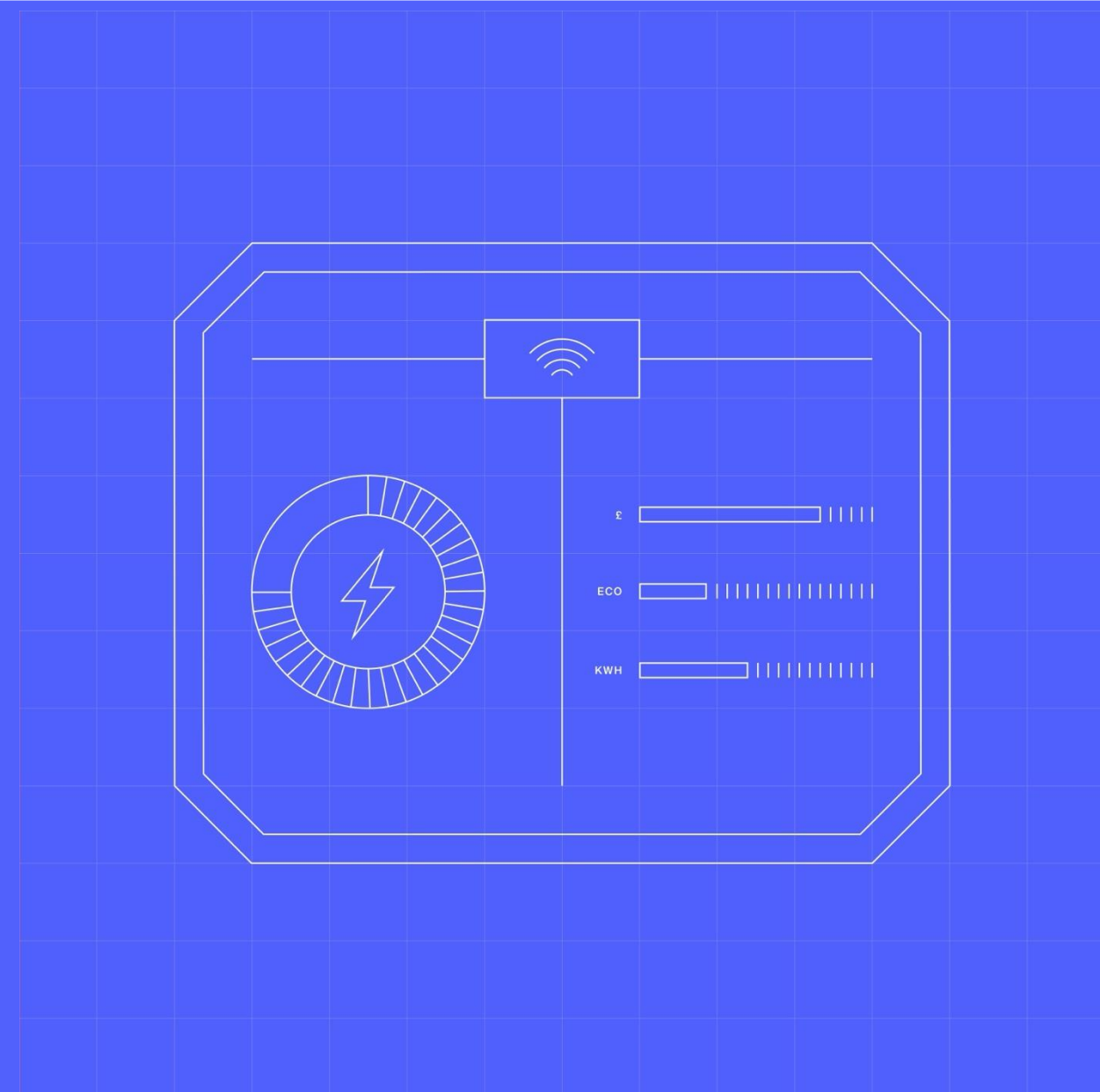


Settlement Monitoring

INFORMATION: Elexon providing updates on Settlement Reporting, including Performance Tolerances, Half-Hourly data over Settlement Runs and SVA Delta between Settlement Runs

Chair and Secretariat

45 mins



Elexon Monitoring

Elexon monitoring proposal:

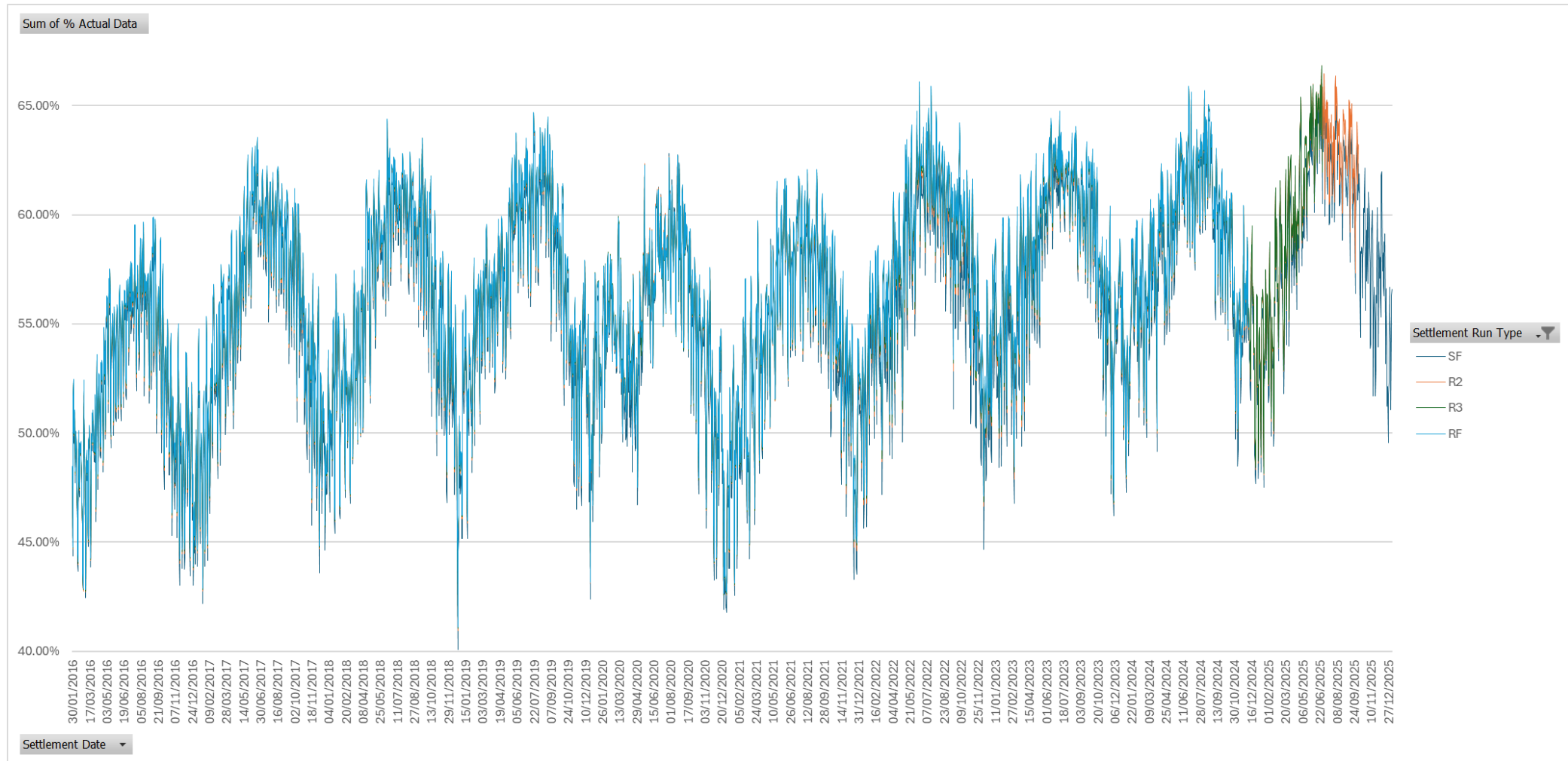
- The overall delta between post-GCF net SVA volumes at the II and SF, R2 and RF, and R3 and RF Runs.
 - This will allow us to approximate the overall, maximum, and minimum values of the changes currently taking place between these runs; these can then be weighed against the associated costs of carrying out those runs
 - Similarly, if more HH data (or advances) is arriving into Settlement at earlier runs (from either SVA or CVA) it follows that the deltas at later runs are likely to reduce
- The mean, median, maximum and minimum Supplier deltas between post-GCF net SVA volumes at the same intervals
 - This is an indication of some of the potential costs incurred by individual Parties through shortening the Settlement window.
- The amount of:
 - i) actual half-hourly data (from legacy or MHHS),
 - ii) estimated Legacy half-hourly data (from measurement classes C,D,E,F & G)
 - iii) profiled or load-shaped data from advances (e.g. Legacy AAs),
 - iv) profiled or load-shaped data based on historic volumes (e.g. Legacy EACs); and
 - v) default datain SVA at II, SF, R2, R3 and RF (note this is subtly different to Settlement Performance in Legacy and MHHS, and the “%AAA” metric we use for Migration)
- The amount of actual half-hourly data in CVA at the same runs

Performance Tolerances

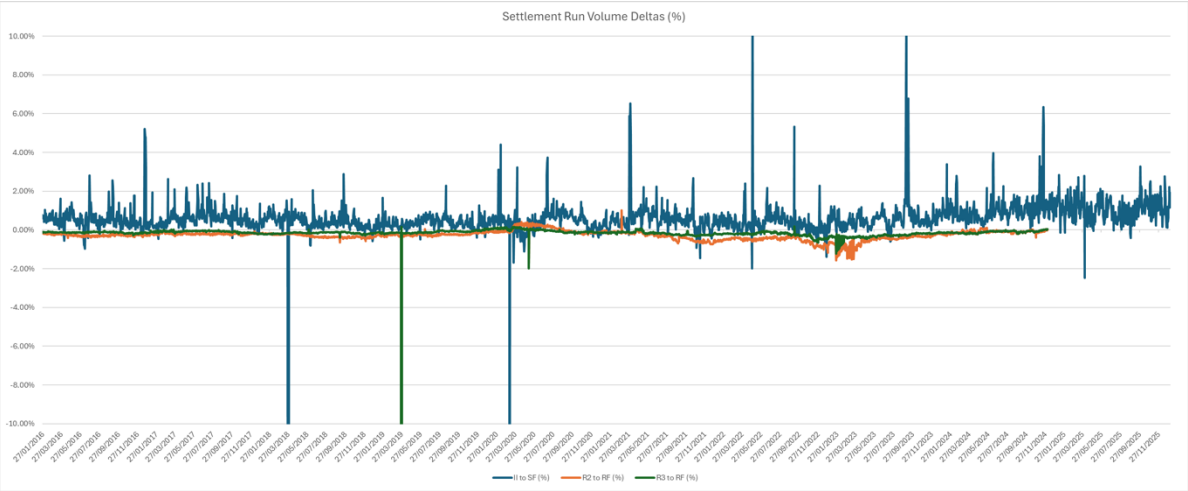
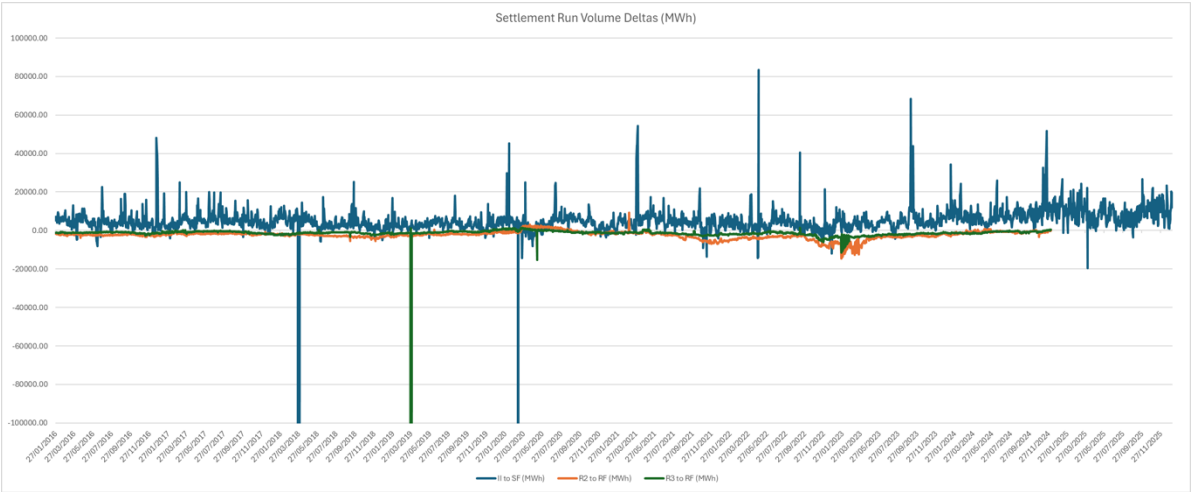
Elexon recommends the following tolerances in order to inform a decision on progressing with shortening the Settlement window:

- [TBC]% of Consumption settled using Actual data at the R3 Run by October 2026
- [TBC]% of MPANs being settled on Actual data at the R3 Run by October 2026
- [TBC]% of MPANs being successfully Migrated by the R3 Run by October 2026

Actual Half Hourly Data Over Settlement Runs



SVA Delta Between Settlement Runs

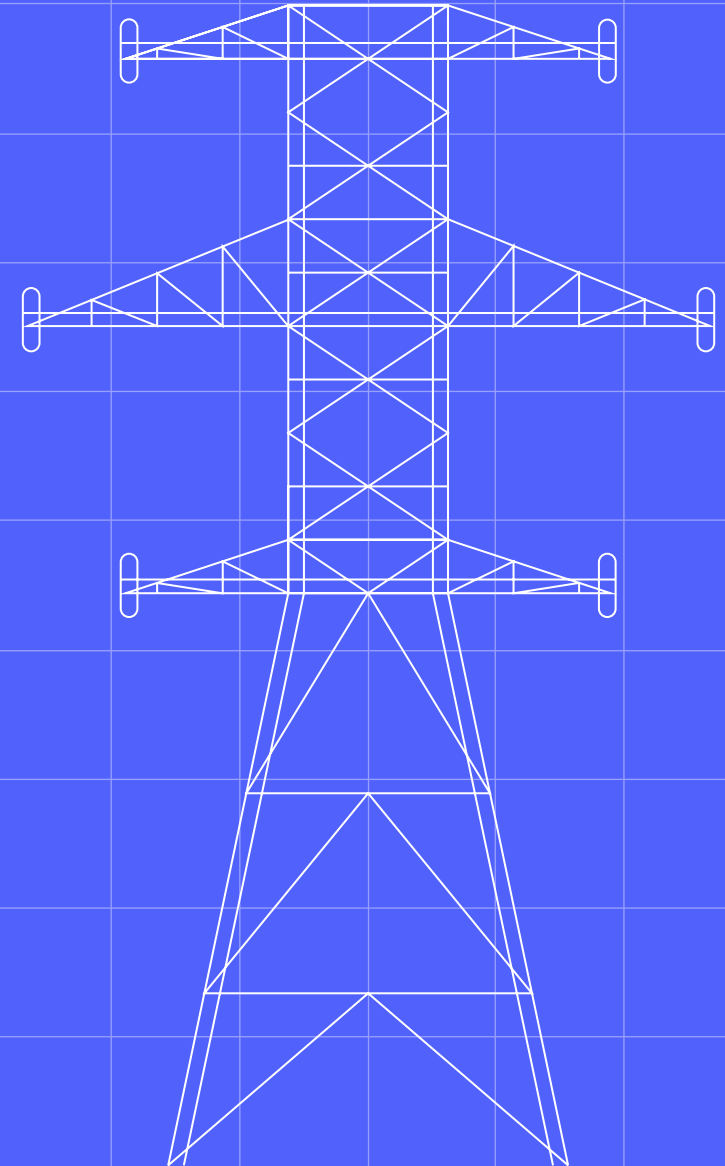


Migration Reporting

INFORMATION: Migration MCC Reporting

Programme

20 mins



Migration Reporting - 1 of 2

The MCC will provide the STEG reports based on Kestrel data:

Migration MCC Monitoring (Programme):		Detailed requirements:
Aggregate reports on total number of Migrations by LDSO a. By Market Segment	<p>This monitoring will demonstrate if the migrations are on track to complete by M15.</p>	<p>RC-05 - Views of transaction initiation and completion: Aggregate views of:</p> <ul style="list-style-type: none"> • IF-031/PUB-031 initiated • IF-036/PUB-035 completed <p>Summary views of all related migration message submissions/completions/errors</p>
	<p>If not, this will play into the decision of moving the RF Run into 7 months or 4 months.</p>	
Number of Failed Migrations by Supplier	<p>This monitoring will show if Suppliers are struggling with the migration processes set out in the MHHS design.</p>	<p>RC-05 - Views of transaction initiation and completion: Aggregate views of:</p> <ul style="list-style-type: none"> • IF-031/PUB-031 initiated • IF-032/PUB-032 rejected • IF-035/PUB-035 rejected <p>Summary views of all related migration message submissions/completions/errors</p>
Number of Reverse Migrations - (only applicable to M14)	<p>Report will help track the expected number of reversals that will need to be re-migrated</p>	<p>RC-05 - Views of transaction initiation and completion: Aggregate views of:</p> <p>IF-003/PUB-003: Notification of Reverse Migration and De-Appointment Count</p> <p>Summary views of all related migration message submissions/completions/errors</p>

The MCC will provide the STEG reports based on Kestrel data:

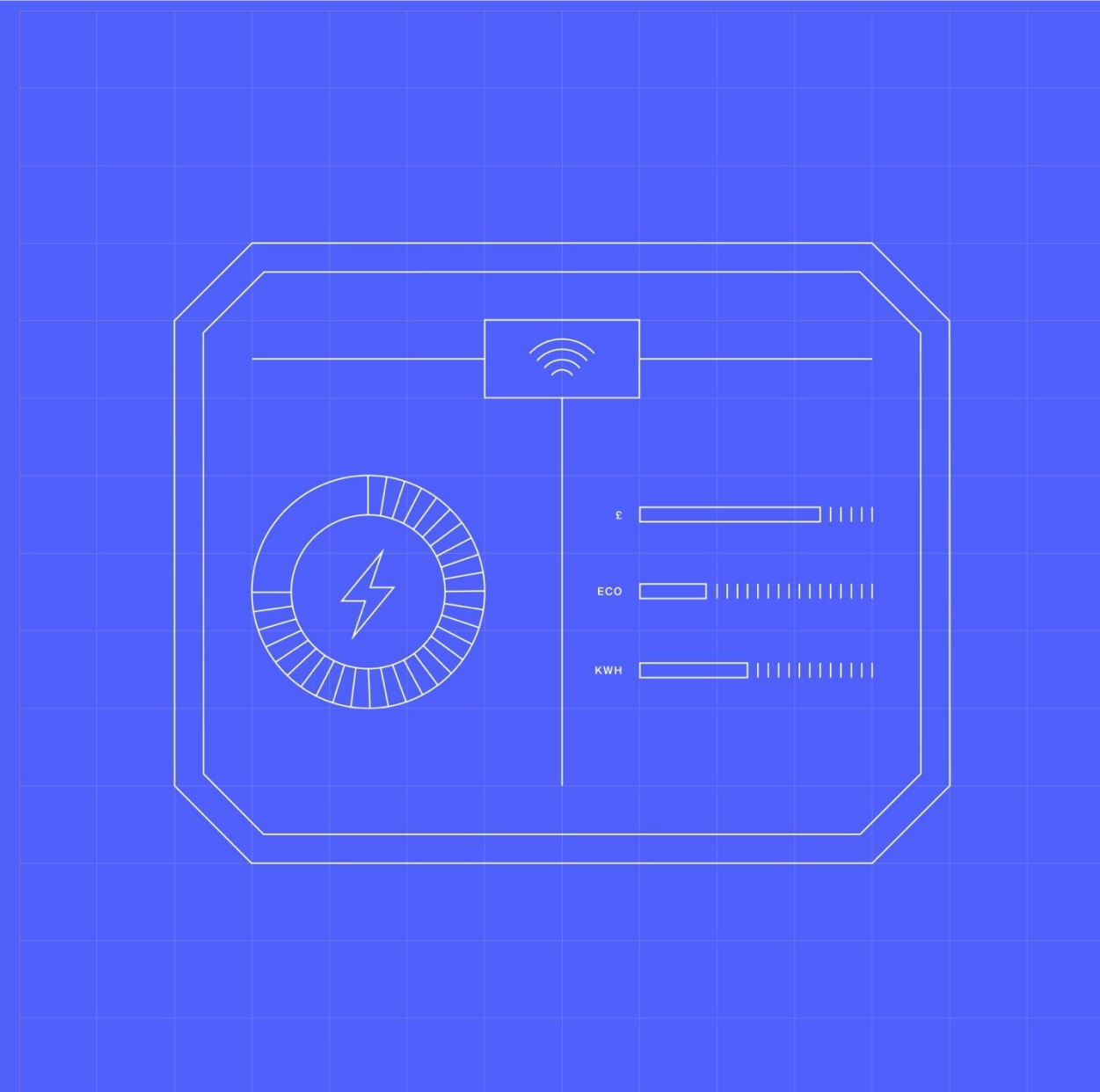
Migration MCC monitoring (Programme):		Detailed requirements - discuss this section:
Number/Volume of the remaining legacy MPANs not migrated and not meeting M15 criteria	<p>This monitoring may highlight metering scenarios that are affecting the ability to hit the M15 Milestone.</p> <p>There will be burn-down report, scope reduced, on Kestrel backlog</p>	<p>This can be derived from the EES data snapshots.</p>
Any issues impacting the ability to Migrate MPANs, e.g., meterless sites, registration data issues	<p>This monitoring may highlight metering scenarios that are affecting the ability to hit the M15 Milestone.</p>	<p>RP-07 - MCC Operational Migration Dashboard:</p> <p>Consolidated view of various Operational reports for day-to-day migration management, tracking issues and potential issues related to the performance and operations of:</p> <ul style="list-style-type: none">• Central services• Registration services• LDSOs• Suppliers• Legacy Agents• Service providers• Elexon

M16 Risks

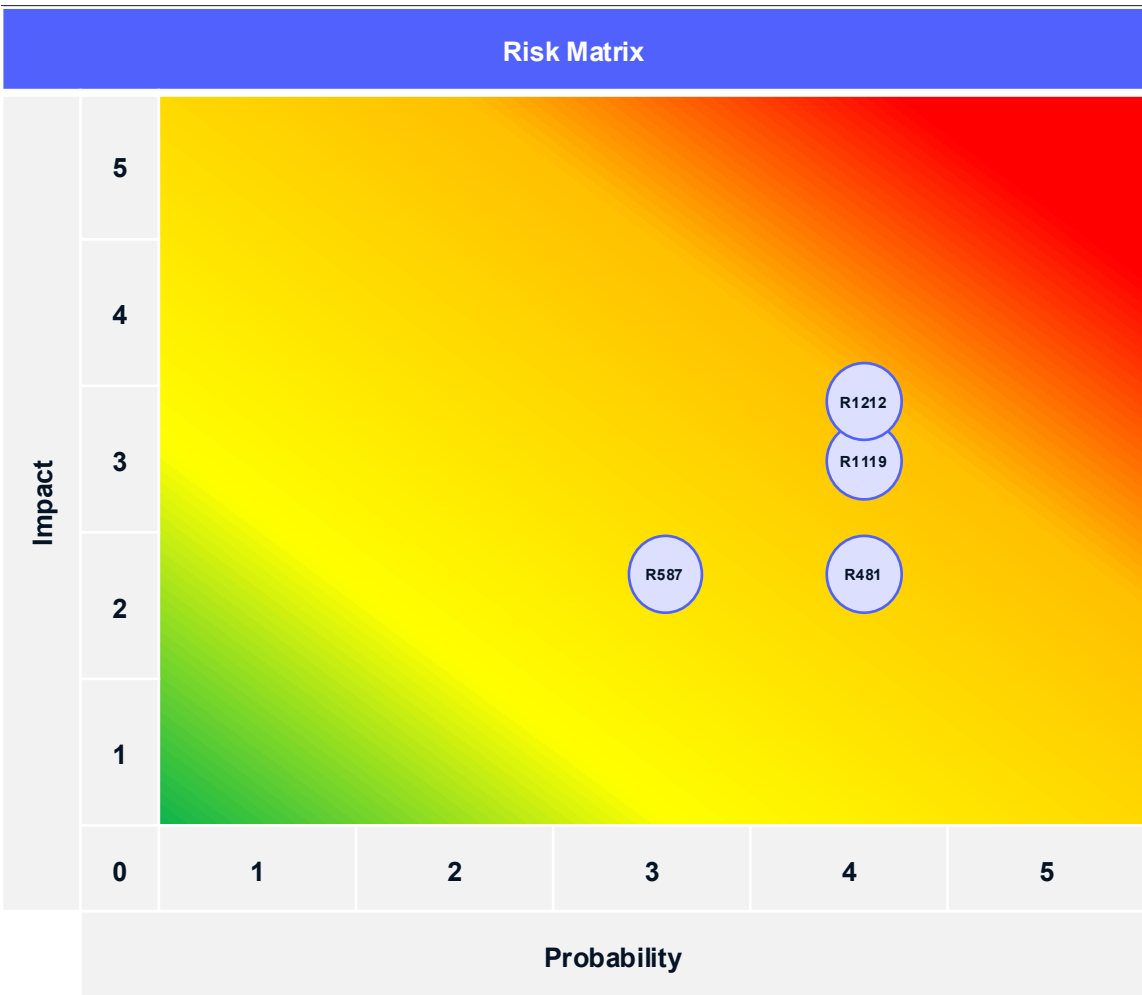
INFORMATION: Risk Matrix and latest risk scores

Programme

Taken as read



Risk Assessment - M16



Key	
	Current Score

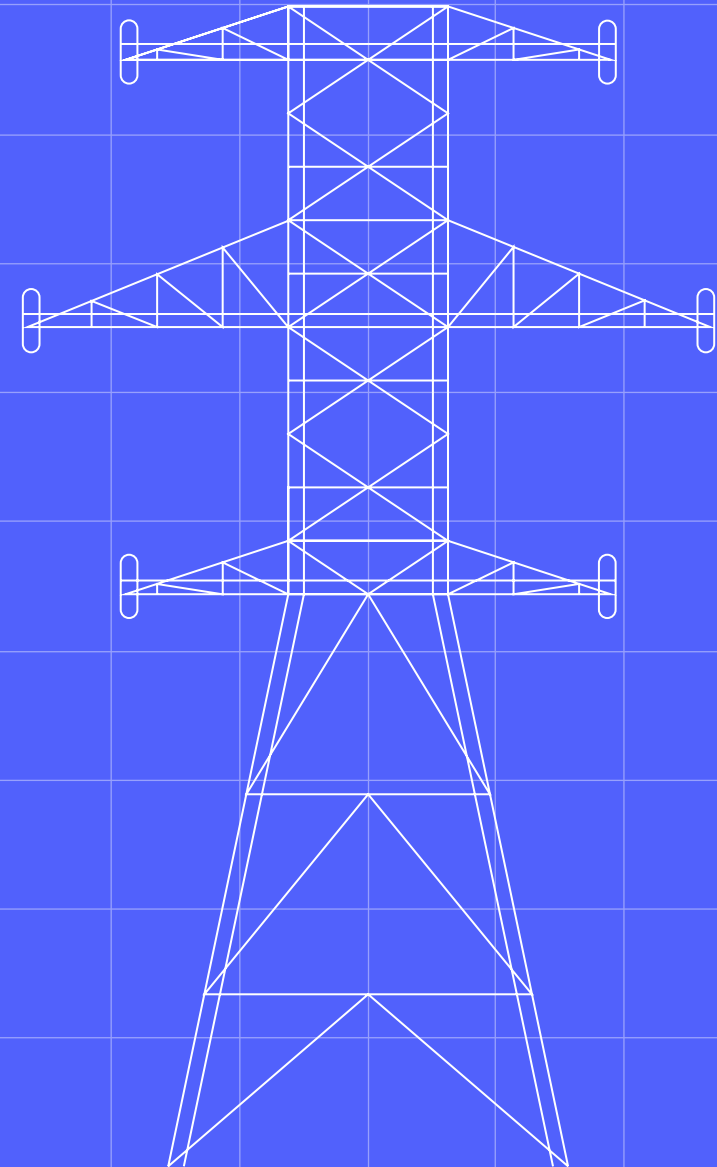
Risk ID	Risk Description	Mitigation	Current Score
R1212	There is a risk that the absence of robust operational monitoring tools for both end users and administration users will lead to undetected issues in system performance, data integrity, and process compliance. Without effective monitoring, anomalies such as failed transactions, incorrect data flows, or system outages may not be identified or addressed in a timely manner.	<ul style="list-style-type: none">DIP Manager team are making tactical changes to the existing toolset to make them more usable. There are also other plans to improve the process.	17
R1119	There is a risk that there will be increased trading disputes on shortened settlement calendars following M16	<ul style="list-style-type: none">Elexon are in the Process of digitalising most manual aspects by M16, meaning more trading disputes will be covered.	13
R481	There is a risk that M16 decision is delayed due to failing on metrics outside the control of the Programme	<ul style="list-style-type: none">SRO briefed LDP on next steps for M16. LDP needs delivery plan to be able to incorporate this into the Programme Plan. Activities are expected to start shortly with the mobilisation of an M16 Expert Group, therefore there needs to be clarity on delivery plan and outcomes to ensure that the first decision in October 2026 can be met.	11
R587	There is a risk that Programme plan Settlement Timetable Transition cut over date decision milestone (13/10/26) is not long enough notice period to enable all the governance approval	<ul style="list-style-type: none">The governance approval is part of the STEG scope and will need to ensure this risk is managed. Output from the group over Q1 will enable a better assessment of this risk.	9

Summary and Next Steps

INFORMATION: Summarise actions and agree any agenda items for next meeting

Chair and Secretariat

5 mins



Summary and Next Steps

Next Steps and Updates:

- Confirm actions from meeting
- Date of next STEG: **Thursday 19th February 2026 at 2pm**
- Date of next MCAG: **Thursday 12th February 2026 at 10am (ELS Exit)**
- Mailbox: opreadiness@mhhsprogramme.co.uk

Agenda Roadmap – a view of upcoming agenda items:

Meeting Date	19 February
Agenda Items	<div>1. Welcome and Agenda</div> <div>2. Introduction</div> <div>3. Plan</div> <div>4. Governance Structure</div> <div>5. Settlement Monitoring & Criteria</div> <div>6. Migration Reporting & Criteria</div> <div>7. M16 Risks</div> <div>8. Summary & Next Steps</div>